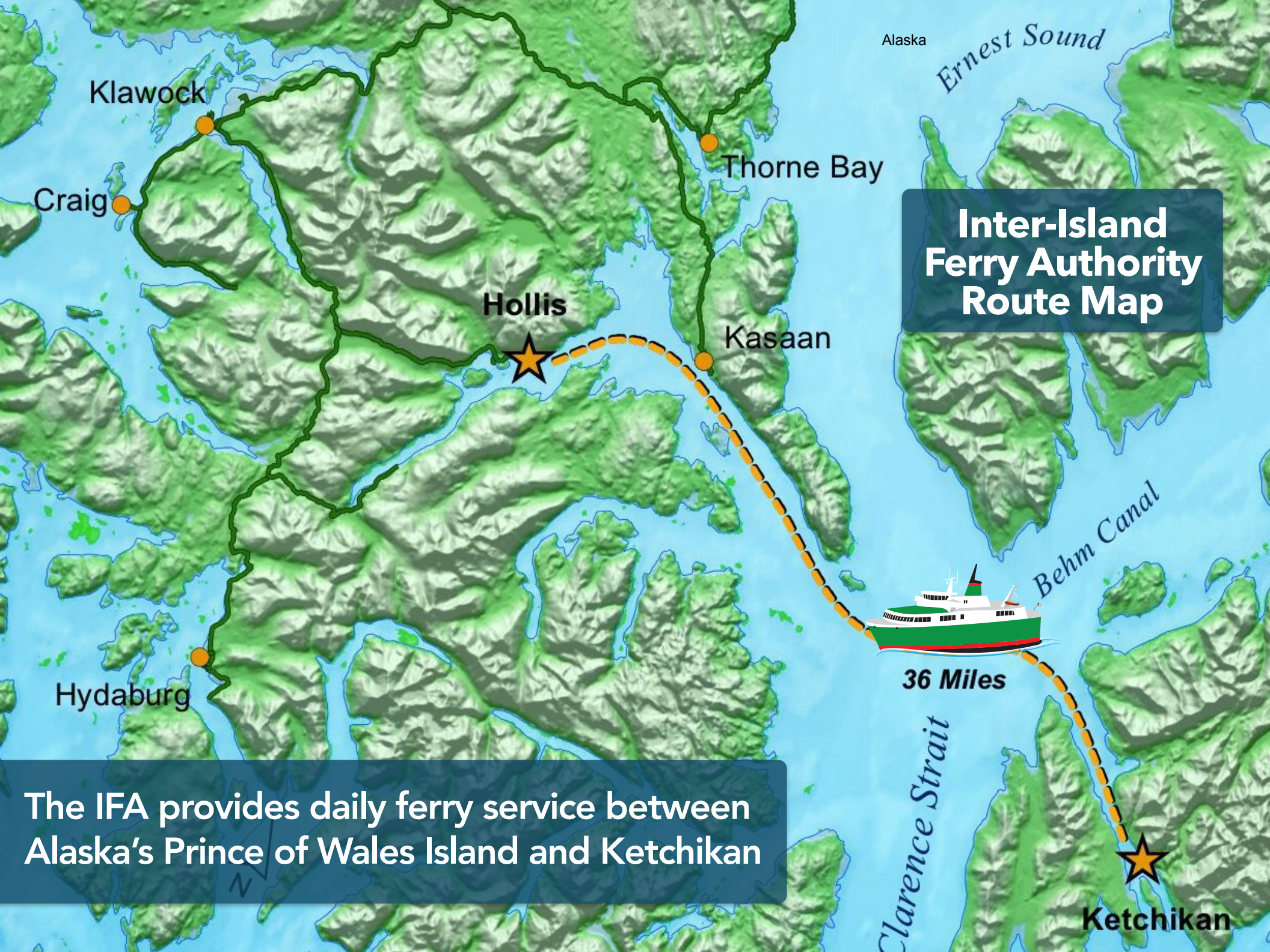


ALASKA'S
**INTER-ISLAND
FERRY
AUTHORITY**
BY THE NUMBERS
2020





**Inter-Island
Ferry Authority
Route Map**

The IFA provides daily ferry service between Alaska's Prince of Wales Island and Ketchikan

36 Miles

Ketchikan

Alaska

Prince of Wales Sound

Klawock

Craig

Hollis

44,200 people
 and **10,000** vehicles
 traveled between
 Ketchikan and Prince of
 Wales Island in 2019

+6%



Hydaburg

36 Miles



Ketchikan

\$46.4 million and 508 jobs

**Inter-Island Ferry
economic impact
2019**

- Seafood
- Tourism
- Health Care
- Ketchikan Spending



Seafood and Other Freight



Two million pounds of fresh and live seafood were shipped by IFA with an **ex-vessel value of \$10 million**

Seafood shipped on the IFA is the highest value of all Alaska fisheries. It includes **oysters, geoduck, roe-on-kelp, halibut, sea cucumber, herring, and black cod**, along with **shrimp and salmon**.

Seafood jobs dependent on this cargo = **185 jobs**
Workforce earnings generated = **\$6.5 million**



"Our business relies on this ferry system and without the IFA we would have to go out of business."
– Dawn Sheets of **Alaska Gold Oysters**

Ferry Tourism

**Tourists
spent**

\$11.2 million

in Prince of Wales on
lodging, food, and
activities in 2019,
after arriving by
ferry



2,900 tourists came to Prince
of Wales on the ferry in 2019,
representing 13% of all ridership.



Ferry Tourism



79% come to Prince of Wales by ferry to fish.



Spending by IFA tourists generated **155** island jobs (including direct, indirect and induced) with an associated payroll of **\$4.7** million.

Medical Trips
by Prince of Wales
residents using the IFA
generated
\$9.2 million
in Ketchikan health
care spending in
2019



Access to Medical Care

POW residents traveling to Ketchikan and Sitka for medical care on the IFA last year represented **at least 12%** of all ferry travel in 2019.



Medical Tourism by Ferry

Supporting **82** Ketchikan jobs.

Shopping
by IFA riders
generated
\$7.5 million in
Ketchikan spending, and
the IFA spent **\$1.1 million**
on repairs, fuel, and
food.

IFA Spending in Ketchikan



22,400
passengers
traveled to
Ketchikan on
the IFA in 2019



Altogether IFA activities generated
an economic impact of **\$26.5**
million in Ketchikan in 2019, and
230 jobs.



Island Jobs Created by the Ferry

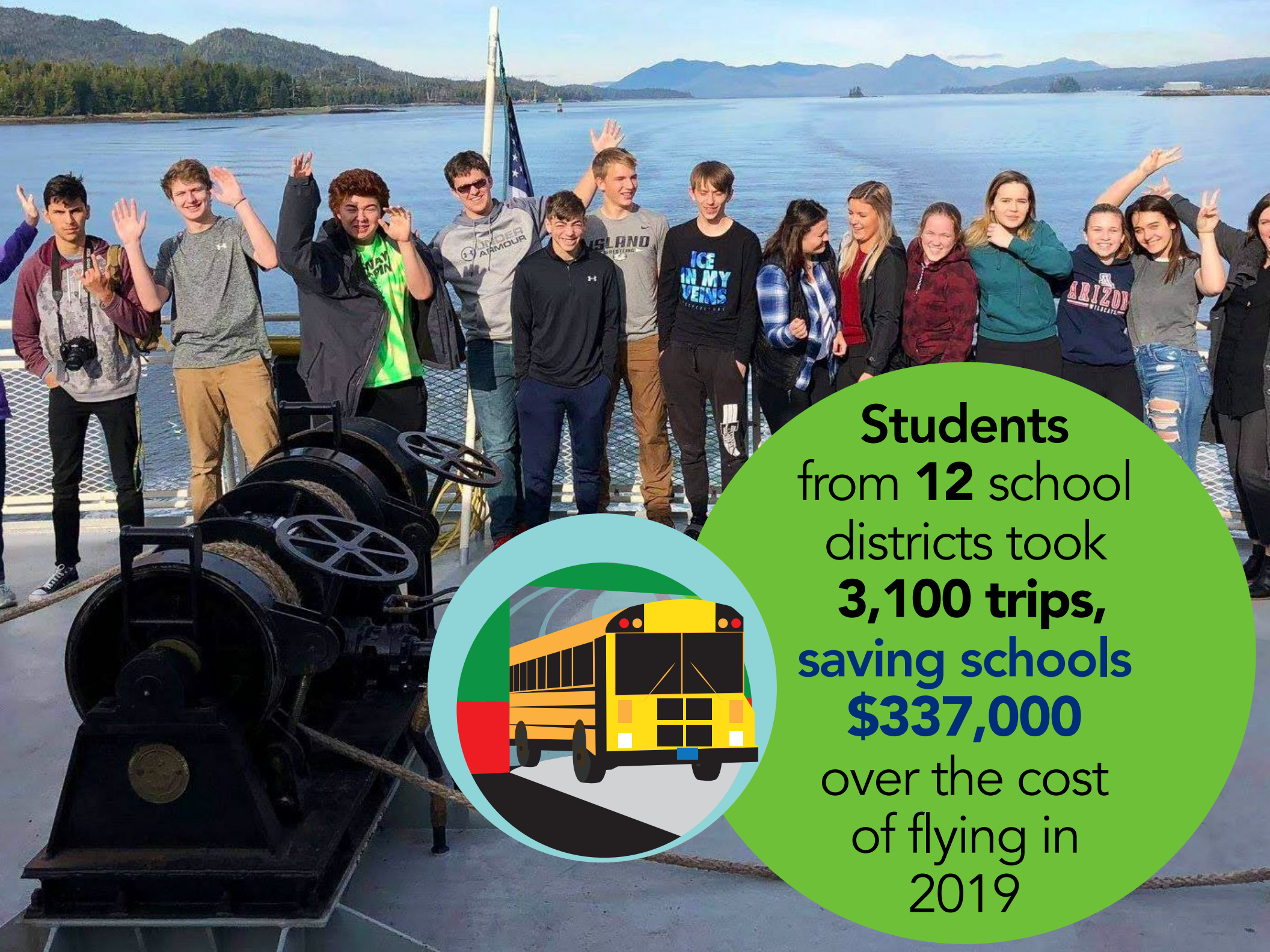
In 2019, the Inter-Island Ferry Authority supported **278** jobs on Prince of Wales Island in the areas of tourism, seafood, and transit, with associated workforce earnings of **\$9.3** million.



The People Who Ride the IFA Ferry

EVERYONE





Students
from **12** school
districts took
3,100 trips,
saving schools
\$337,000
over the cost
of flying in
2019

Savings Accumulate



Children
and senior
citizens using the IFA
have saved
\$19.3 million
over the price of
flying since
2002



Coordinated Transportation

Prince of Wales Residents

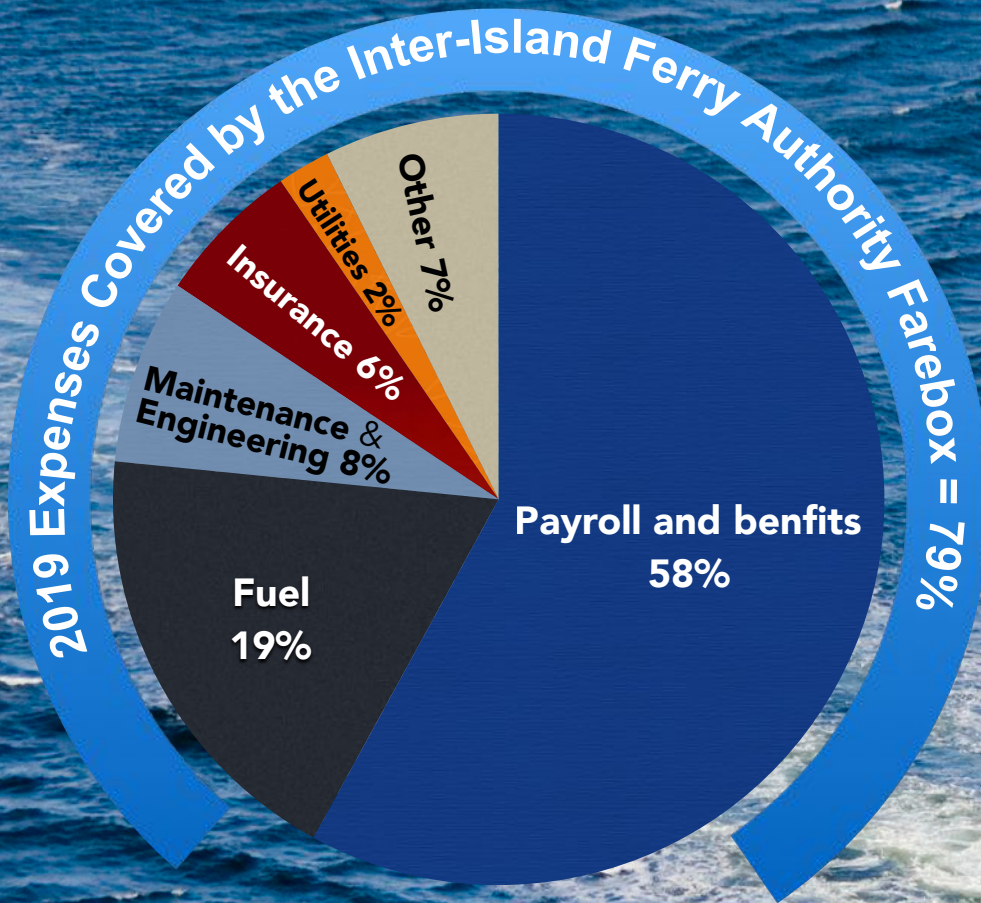
22% have a disability

17% are below poverty

13% are veterans



The IFA had a farebox recovery rate of 79% in 2019



Passenger/Vehicle Ferry	Farebox Recovery
Steamship Authority	98%
Inter-Island Ferry Authority	79%
Washington State Ferries	73%
BC Ferries	67%
North American Average	59%
Cape May-Lewes	55%
Alaska Marine Highway	33%
North Carolina Ferries	6%

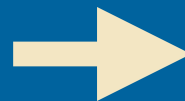


A High Return on Investment

Leveraging State Dollars of Alaska

The Inter-Island Ferry Authority leveraged funding provided by the State to attract millions of dollars and hundreds of jobs to Prince of Wales. In FY2019, IFA leveraged state support to generate \$46.4 million in economic activity in the sub-region, or \$70 in economic activity for every dollar of state funding invested.

\$1
State



\$70
Inter-Island Ferry
return on
investment in
2019

THANK YOU



Inter-Island Ferry Authority